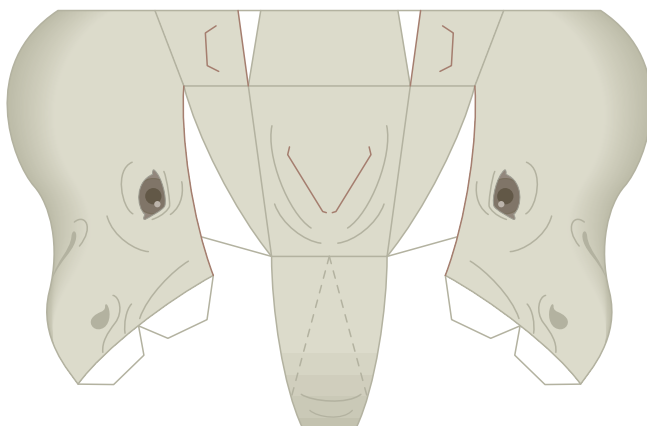
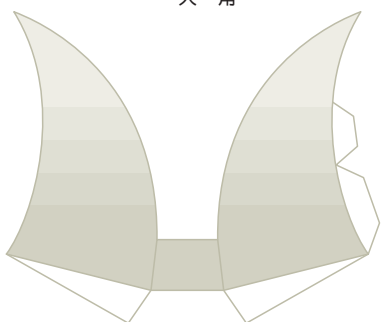


頭部



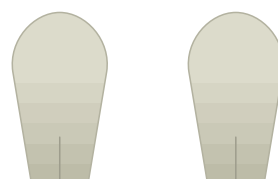
大角



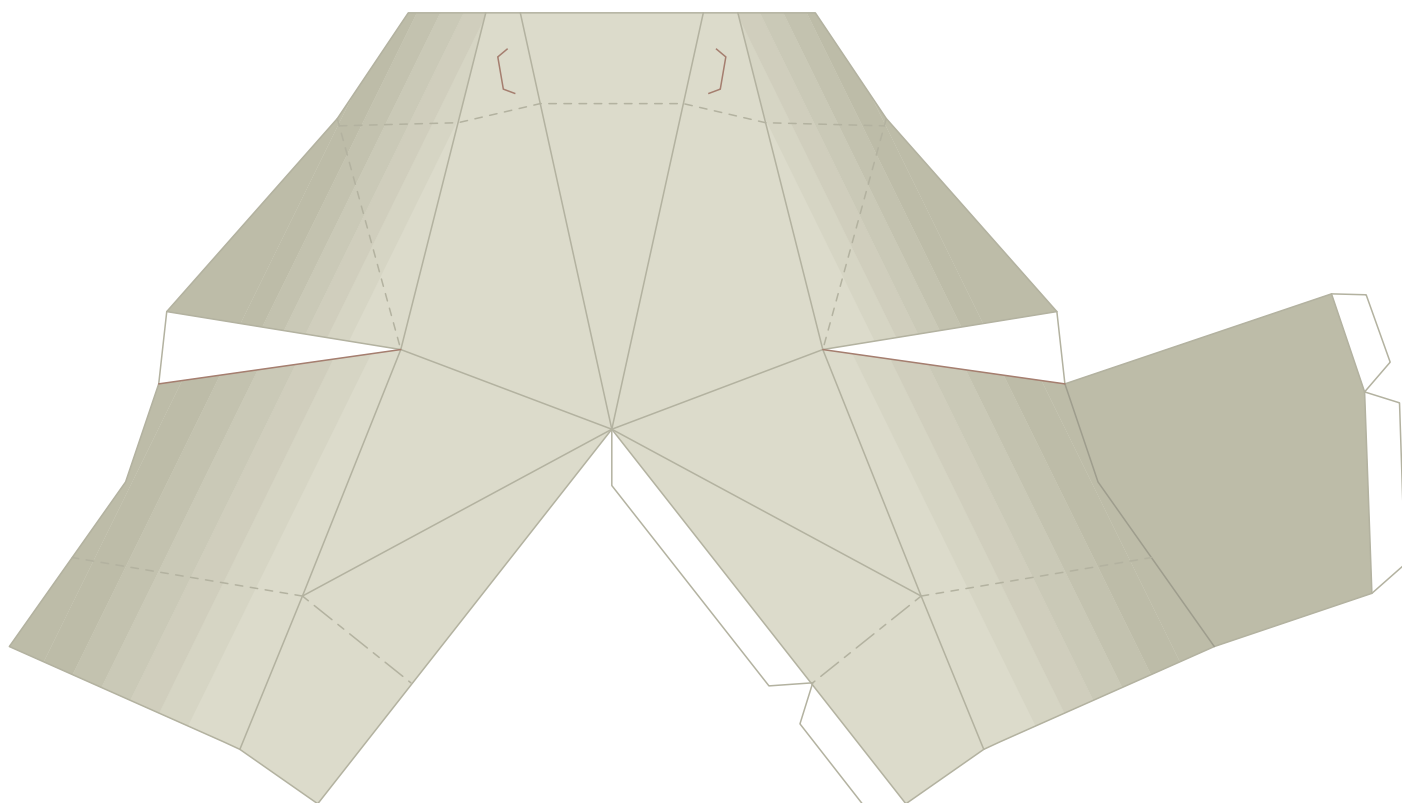
小角



耳



胴体

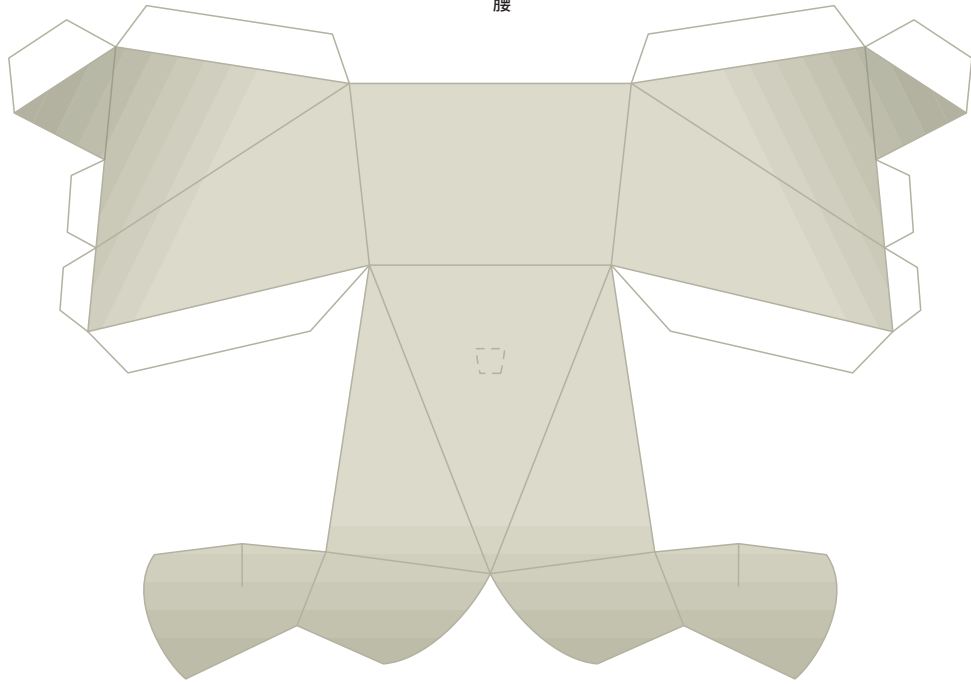


p a p e r c r a f t

線の種類

- 山折り線 - - - - 谷折り線
- 切り込み線 - - - - 接着ガイド線

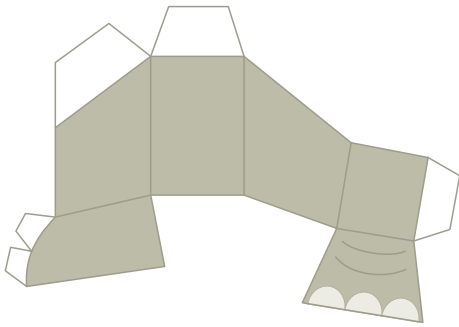
腰



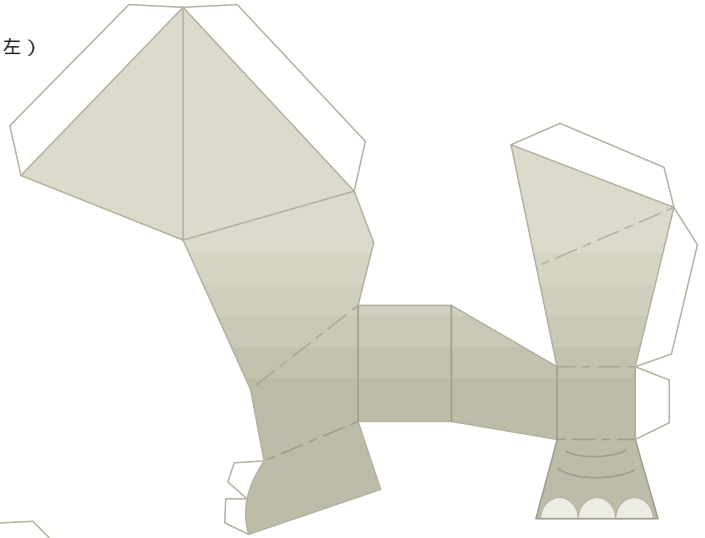
しっぽ



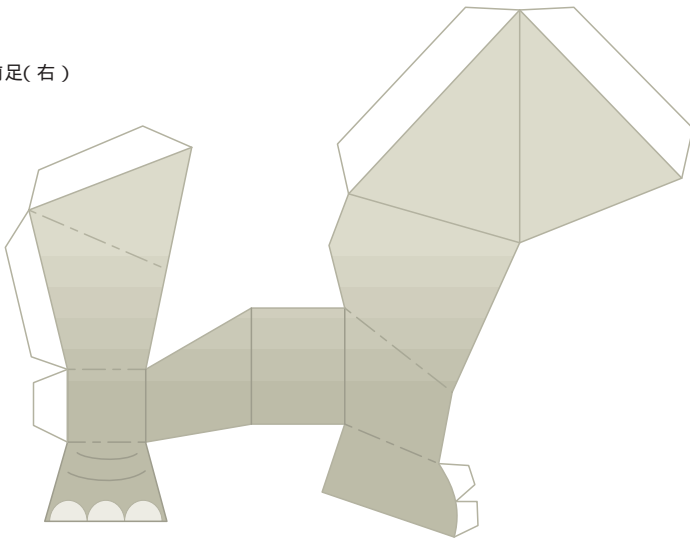
後ろ足(左)



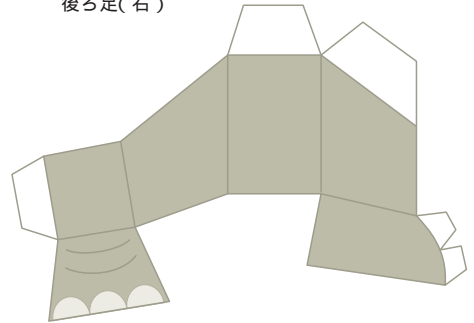
前足(左)



前足(右)



後ろ足(右)



p a p e r c r a f t

線の種類

- | | | | |
|--|-------|--|--------|
| | 山折り線 | | 谷折り線 |
| | 切り込み線 | | 接着ガイド線 |